



Georgia Junior Livestock Foundation

The Expo

December 10-13, 2025

Perry, Ga.

Who is the GJLF?

The Georgia Junior Livestock Foundation (GJLF) is a statewide organization that recognizes Georgia junior livestock exhibitors for their hard work and dedication to the livestock industry. Through public support and fundraising projects, the Foundation is able to provide financial assistance to Georgia's youth actively involved in the livestock industry through premiums, scholarships, the GJLF Showmanship Point Circuit, and other industry initiatives including the GJLF Expo. The long range goal of the GJLF is to strengthen the scholarship and Showmanship Point Circuit components, reward more youth livestock participants, and to help enhance the success of the junior livestock programs in Georgia. The GJLF is a non-profit 501(c)3, charitable organization administered by an unpaid, volunteer board.

What is the Mission?

The GJLF is to promote youth livestock exhibitors across the state by recognizing young people for their involvement, leadership and dedication to the livestock industry, and success with their livestock projects. Through fundraising initiatives implemented by the GJLF, the board will be able to financially support programs targeting those young people while gaining a higher recognition of the livestock industry.

Founded in 2011

Established founding family memberships 2011

- 100 Founding Families = \$100,000 year 1

Started Corporate Funding in 2011

- \$790,000 in Corporate Sponsorships

Started giving towards Top 5 awards in 2011

- \$525,000 Premiums = 500 Exhibitors

GJLF scholarships established in 2012

- Since then - 86 Scholarships = \$93,000

Showmanship Point Circuit established 2014

- 550 kids awarded more than \$85,000 in cash and prizes

Other Activities

- Purchase ads in State Show catalog
- Held Blood Drive
- Held 2 Clay Shoots
- Pop Tab Collections
- Provided T-shirts to exhibitors- 14,000 T-shirts
- One Yearbook
- Sponsored Awards for Legislative Showdown
- GJLF Showring Showdown 2022

What is the GJLF Expo?

The GJLF Expo is a multi-specie junior livestock show that is open to the world! This show was originally created by the Jackson County Young Farmers Association as a swine show, and now has become one of the most anticipated shows of the year by youth livestock exhibitors encompassing all species and led by volunteers of the GJLF. Exhibitors have a chance to showcase their swine, breeding does, breeding ewes, dairy cattle, beef heifers or market beef at this event. Additionally, the best of the best compete in showmanship competitions at this event! Families are invited to participate in the Family Dinner Night to enjoy a free meal where the GJLF Partners are recognized, scholarships are presented and the prestigious GJLF Showmanship Point Circuit events are awarded!

2024 GJLF Expo Results at a Glance

- 50 Champions Named
- 6 Different States Represented
- 745 Exhibitors
- 1,435 Animals Exhibited
- 5 Species
- 7 Scholarships Awarded
- Fed 1,500 people during the Family Dinner
- Awarded \$80,000 in show premiums and prizes
- 3,657 views on the Expo Livestream



GJLF Expo Partnership Level Packages

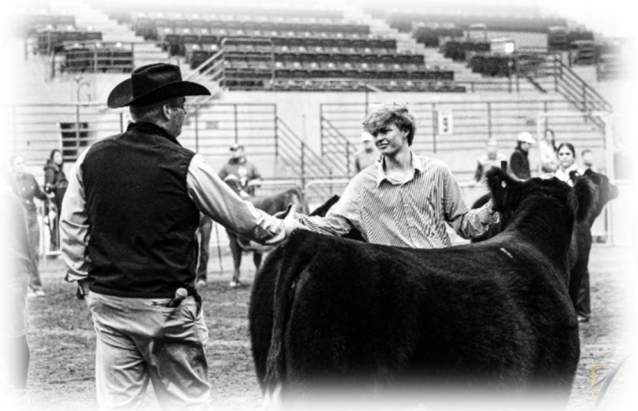
Presenting Partner - \$50,000+

- Name mentioned everywhere show is named
- Logo presence on all Show Related Material
- Logo placement on all backdrop banners
- Logo/company name placement on all show prizes (banners, ribbons, awards, belt buckles, etc)
- Logo placement on the frame of our Live stream
- 1- :30 "commercial" for the live steam to broadcast during breaks in the show
- Live mentions throughout show (via live broadcast and on-site mentions)
- Social Media Exposure each time show is referenced
- Booth space availability during event
- Partnership dinner recognition
- Banner placement on-site at all show areas
- Banner placement at main entrance gate
- Logo placement on The Expo website
- Additional media exposure upon availability



Trailer Partner – (7 Trailers)

- Trailer wrapped with show logo and partner logo
- Live mentions on-site during event
- Live mentions on the live stream broad cast
- Logo presence on all show related material
- Booth space availability during event
- Partnership dinner recognition
- Banner placement at main entrance gate
- Logo placement on The Expo website
- Additional media exposure upon availability



Arena Partner - \$15,000+ each (4 total)

- Presenting rights to a specific Arena
- Name/logo placement in Arena
- Live mentions throughout event
- Social media exposure leading up to show
- Booth space availability during event
- Partnership dinner recognition
- Logo placement on The Expo website

Family Night Dinner & Activity Partner - \$10,000+

- Banner placement at event
- Social media exposure leading up to the dinner
- Partnership dinner recognition
- Logo placement on The Expo website
- Booth space availability during event

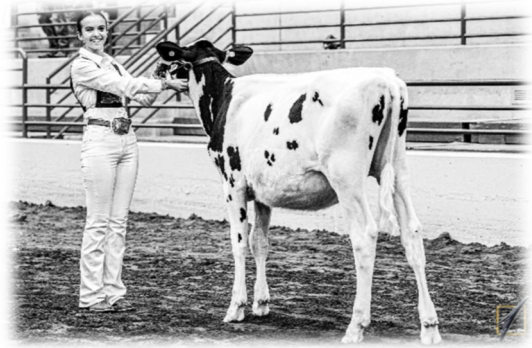


Office Building - \$ 10,000+

- Building to use for show office
- Logo on all marketing efforts
- Advertise prior to show
- Live mentions during show

Barn Partner - \$2,500+ each (4 total)

- Name/logo placement in sponsored specie barn
- Live mentions throughout event
- Multiple banner placements in each arena
- Social media exposure leading up to show
- Booth space availability during event
- Partnership dinner recognition
- Logo placement on The Expo website



Showmanship Specie Partner - \$2,000+ each (5 total species)

- Live mentions during the show and showmanship classes
- Social media mentions
- Logo placement on the GJLF Expo Website
- Additional media exposure when available



General Show Partner- \$1,000+

- Name/Logo recognition during event
- Social media exposure prior and during event
- Verbal recognition throughout the event
- Additional opportunities upon availability

Friends of The Expo Partner - \$500+

- Name recognition at the event
- Social media exposure
- Verbal recognition throughout the event

Senior Scholarships

- Please contact the GJLF if you are interested in starting a Scholarship Endowment.

Class Presenter - \$150 per class (150 total for all species)

- Live mentions during the show and that particular species' class
- Social media mentions
- Logo placement on the GJLF Expo Website
- Additional media exposure when available

Vendor space - \$650 per 10 x 20

- Booth space availability during event
- Social media exposure leading up to and throughout the event
- If you need a larger space, reach out and we will be happy to design a custom location and pricing structure



GJLF Partner Commitment



☐ Yes, I would like to be a 2025 GJLF Partner

Company Name _____

Address _____

Contact _____ Email _____

Please check the level at which you would like to sponsor:

☐ **Presenting Partner - \$50,000+**

☐ **Trailer Partner**

☐ **Arena Partner - \$15,000+**

☐ **Family Night Partner - \$10,000+**

☐ **Office Building Partner - \$10,000+**

☐ **Livestock Barn Partner - \$2,500+**

☐ **Showmanship Specie Partner - \$2,000+**

☐ **General Show Partner - \$1,000+**

☐ **Friends of The Expo Partner - \$500+**

☐ **Class Presenter - \$150**

☐ **Vendor - \$650**

☐ **Contact me about a Scholarship Endowment**

TOTAL SPONSORSHIP AMOUNT:

\$ _____

☐ Invoice me

☐ Donation was made via Paypal scan (using link below)
<https://www.paypal.com/ncp/payment/EV5YTQVUAFTJA>

☐ Check Enclosed

PARTNERS WITH COMPLIMENTARY VENDOR SPACE & VENDORS:

☐ I would like a Table Top Display during the GJLF Expo December 10-13, 2025 (*please see information from previous page*).

I would like my booth to be in the ☐ Hog Barn ☐ Beef Barn ☐ Dairy Barn ☐ Sheep/Goat Barn

Sponsorship Deadline:

All final partnerships should be made prior to November 1, 2025. However, we will begin promotion partners on social media as they are committed to.

GJLF Contact:

Georgia Junior Livestock Foundation, c/o Christy Page, Executive Secretary
189 W. Athens St. Ste 1A · Winder, GA 30680
770-586-5255 · info@gajrlivestockfoundation.org